

Woodridge First Party

CAMPAIGN PLATFORM

- *** CONTINUED GROWTH THROUGH EFFECTIVE ADMINISTRATION
- *** FORMATION OF A WOODRIDGE COMMERCIAL DEVELOPMENT PROGRAM
- *** CONTINUED DEVELOPMENT OF YOUTH ACTIVITIES AND PROGRAMS
- *** CONTINUE THE ADMINISTRATION'S TOTAL FISCAL MANAGEMENT PROGRAM
- *** WORK FOR IMPROVED FIRE PROTECTION
- *** CONTINUE TO NEGOTIATE WITH DEVELOPERS FOR DONATIONS - TO THE SCHOOL DISTRICTS, PARK DISTRICT, LIBRARY BOARD AND FOR VILLAGE REQUIREMENTS
- *** DEVELOPMENT OF A COMPREHENSIVE ENVIRONMENTAL PLAN

HONEST GOVERNMENT, BY THE PEOPLE - FOR THE PEOPLE

GOOD GOVERNMENT GROWS

Vote Woodridge FIRST PARTY

APRIL 20, 1971

For the

FUTURE OF WOODRIDGE



Gerald Mikula
Trustee Candidate
2 Year Term

Retain
Good
Government



Nick Haviland
Trustee Candidate
4 Year Term



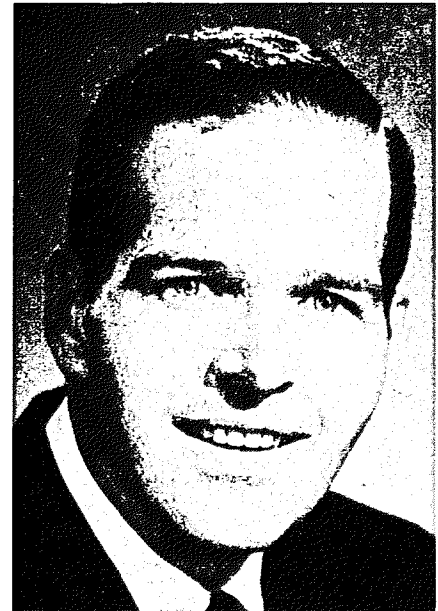
Tom Nestrud
Trustee Candidate
4 Year Term



Re-elect
Mayor William Cagle
A Man of Integrity.

A Solid Family Man
with 10 Children.

The acknowledged
leader of a team
with an impressive
record.



Incumbent Robt. Mayer
Trustee Candidate
4 Year Term

vote woodridge first party

CONTINUED GROWTH THROUGH EFFECTIVE ADMINISTRATION

- *** CONTINUE to advise all residents directly of all business that is before the Mayor and Board of Trustees prior to a Village Board meeting.
- *** Provide positive direction to the Village Administrator in his duties with the various Village departments.
- *** CONTINUE to advise all Trustees of matters before each committee.
- *** Submit to our residents an Annual Report, showing the objectives and goals for the forthcoming year.
- *** CONTINUE to provide an expandable, well-trained and equipped Police force.
- *** CONTINUE to provide, and improve, service through our Public Works Department.
- *** CONTINUE full cooperation and assistance to the Village Clerk concerning her performance of duties for the Village residents.

FORMATION OF A WOODRIDGE COMMERCIAL DEVELOPMENT PROGRAM

- *** Work for the purchase and expansion of the Sewer & Water Company.
- *** Work with the Industrial Steering Committee, Woodridge businessmen and a professional Planner in establishing a comprehensive ten-year commercial development schedule.
- *** Review and upgrade all necessary ordinances for the construction and operation of business and industry in the Woodridge area.
- *** Work to bring the contiguous parcels of planned Commercial and Industrial properties under one ownership or option through an Industrial Development Corporation and/or Village purchase and control and/or purchase by an industrial Developer.
- *** Establish an effective program for 'selling' Woodridge's industrial opportunities.

CONTINUED DEVELOPMENT OF YOUTH ACTIVITIES AND PROGRAMS

- *** Increased utilization of community property
- *** Full cooperation with Park Districts, School Districts, Village Administration, etc.
- *** CONTINUE to support and strengthen the Adult Advisory Committee.
- *** Give our full support to programs and activities as recommended by the Youth Coordinator.
- *** Implement a study to determine the feasibility of a permanent structure for use by the youth of the Village.

CONTINUE THE ADMINISTRATION'S TOTAL FISCAL MANAGEMENT PROGRAM

- *** Implement uniform Purchasing procedures, taking advantage of joint needs for discounted prices.
- *** Reappraisal of investment policies, with a view towards a more aggressive, yet secure position.
- *** EXTEND the applications of Data Processing techniques to additional areas of the Village's business.
- *** Improve Fiscal Budgeting methods, with the Department heads responsible for the administration of their respective moneys.
- *** ESTABLISH a Furniture & Fixtures Inventory for all Village-owned items with a value of \$100 or more.
- *** CONTINUE to be watchful of Departmental expenditures, offering Fiscal Management suggestions to Department heads and adjusting surpluses and deficits to keep a balanced budget.

WORK FOR IMPROVED FIRE PROTECTION

- *** Establish new street routings in and out of various areas of the Village to facilitate faster Fire & Police response to calls.
- *** Attempt to get representation on the Lisle F.P.D. Board.
- *** In cooperation with the Lisle Fire Protection District, hire a Fire Safety Engineer to determine what improvements, if any, can be effected in the technical operations of the District.
- *** Encourage the Village residents to participate more actively in their Fire District's operation.
- *** Provide an effective channel of communications between the Village residents and the Lisle F.P.D. Trustees by maintaining the 'Blue Ribbon' Committee as a permanent committee.

CONTINUE TO NEGOTIATE WITH DEVELOPERS FOR DONATIONS - TO THE
SCHOOL DISTRICTS, PARK DISTRICT, LIBRARY BOARD AND FOR
VILLAGE REQUIREMENTS

*** CONTINUED and improved cooperation between all taxing
bodies and the Village Board.

*** CONTINUE to advise the residents of the advantages obtained
and utilized in Annexation agreements.

DEVELOPMENT OF A COMPREHENSIVE ENVIRONMENTAL PLAN

- *** Form a Community Beautification Program.
- *** Work to establish enabling legislation to control nearby County rezoning requests.
- *** Attempt to unite surrounding areas in a common plan for development, utilizing a professional Planner - Unit zoning.
- *** CONTINUED preservation of open space for outdoor education.
- *** Institute a study to upgrade the Woodridge 701 Master Plan.