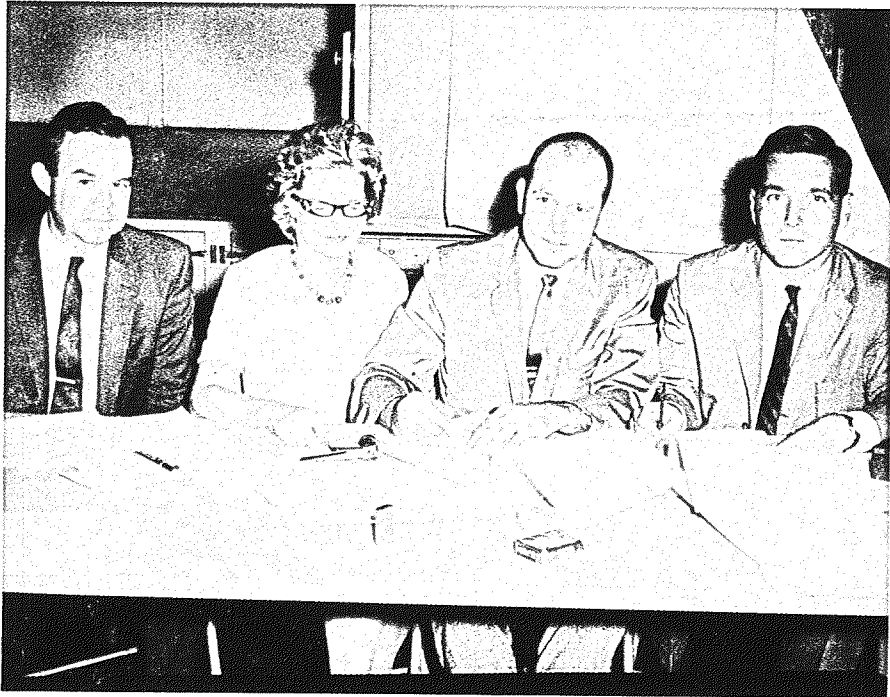


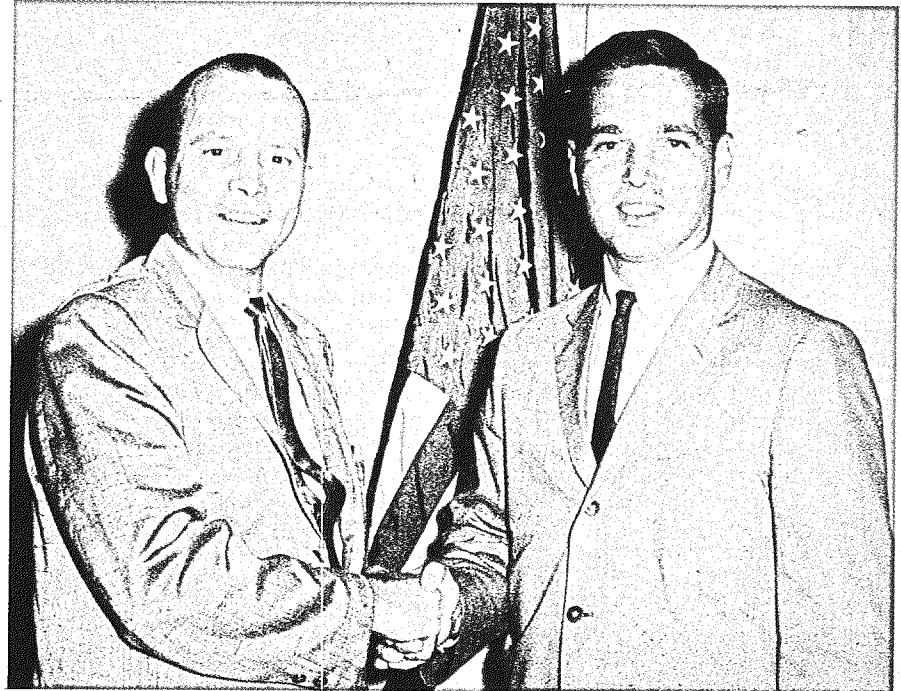
## WINSTON-MUSS NOW IN VILLAGE

*Historic Moment*



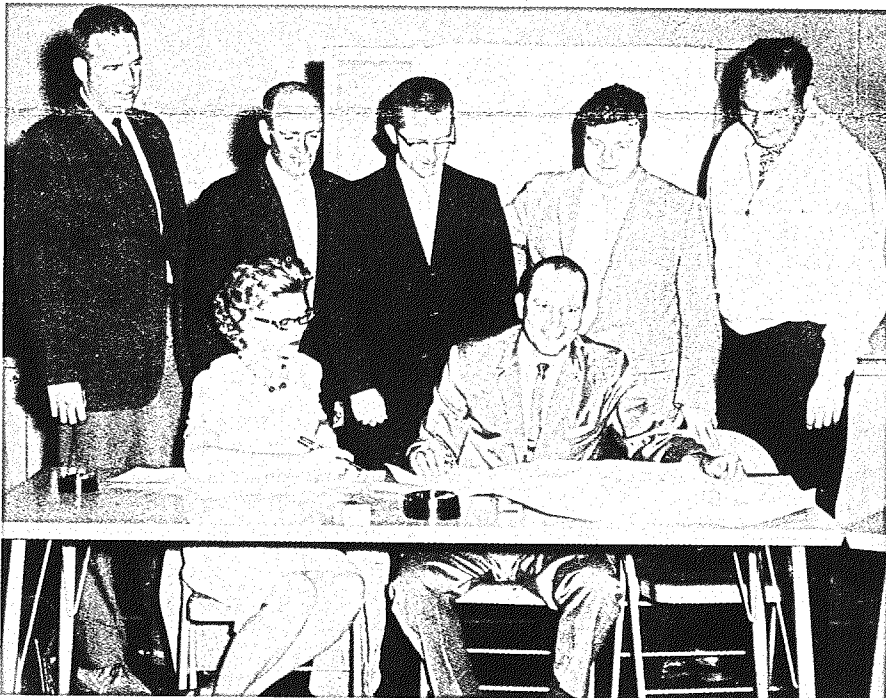
L to R: James Blaeser, ass't. secretary of Winston Park Estates, Faye Hoffman, village clerk, President W. Roberts and Joshua Muss during signing of the agreement.

*... And After*



L to R: William Roberts, village president, and Joshua Muss, vice president of Winston-Muss shake hands after signing the agreement.

*At Last*



Village board poses for photograph after signing.  
L to R top row: Ed Redmond, Jim Kinser, Dave Callahan, Marvin Wiggins and Walter Hansen. At table: Faye Hoffman and William Roberts.

### Wiggins, Roberts Praise Agreement

When contacted by the WNR, Trustee Marvin Wiggins said he felt that with the present agreement "we are in a better position to negotiate. Benefits to the village have increased." He indicated he felt that three major changes were effected: a 12 1/2 acre park site has been obtained for immediate use; lawyers fees incurred in connection with the annexation are to be paid by Winston-Muss (agreed to in a separate document) and in addition to these material benefits, Wiggins said, the board insisted on changes in the legal language of the document which he feels will benefit the village. Trustee Wiggins stated in conclusion that he "hopes everyone will support the referendum."

President William Roberts, when contacted, said that he felt that the agreement is basically good. "I think the village has received fair return and so did Winston-Muss."

He commented that he felt some flexibility has been lost by taking the 12 1/2 acre park site instead of having the option on the community center site on Hobson rd.

Turn to page 5

### Annexation Referendum Oct. 5

The pre-annexation agreement between Winston-Muss and the village included a provision calling for a referendum to be held to obtain voters' approval or disapproval of the annexation. In line with this provision the village board at its special meeting Sept. 12 passed an ordinance setting the referendum for October 5.

Official notification of the election will be published in the WNR, Suburban Life and the Lisle Advertiser. A sample ballot will appear in Suburban Life. The village hall, 2909 Forest Glen pkwy, will be the polling place and the polls will be open from 6 a. m. to 6 p. m.

If you will be absent from the county, physically incapacitated, or for religious reasons cannot vote on election day, you may make application with the village clerk, 2909 Forest Glen pkwy. Application must be made before Sept. 30 and must be returned no later than 6 p. m. on the day of the election, Oct. 5.

An historic moment in the history of Woodridge was witnessed by citizens at the special village board meeting Sept. 12. The long-awaited annexation of the Winston-Muss territory became a reality.

The annexed area encompasses 565 acres and will eventually contain 1,800 to 2,000 living units. A shopping center

### 200 Builders Visit Woodridge Models

Forest Glen Pky. was the scene of much activity last Thursday when nearly 200 builders representing several midwest states visited the new model homes recently opened by Surety Builders Inc.

The two day program which included talks by leading authorities in the building field and a one-day forum conducted by Paul Hyde, vice president of Harnischfeger Homes, Inc., was arranged to acquaint the builders with the building techniques and innovations of Surety's new models which were officially opened last month.

The builders were accommodated at the Aurora Hilton Inn and were transported by bus to Woodridge.

The visiting builders on passing through the models, commented favorably on various features of their design, lighting and decoration.

The most excited comments were for the advancement of the new Exotica to be incorporated in future models.

### School Vote Saturday

The Downers Grove Community high school referendum calling for a 21¢ increase in the educational fund tax rate will be held Sat., Sept. 21. Woodridge residents will vote at Woodridge school between 9 a. m. and 7 p. m.

To be eligible to vote you must be a U. S. citizen, over 21 years of age, a resident of the state one year, the county 90 days, and the school district 30 days.

A new law passed in the last session of the Illinois State legislature requires that voters in school elections must be registered for a general election from a residence in the school district. Voters will be required to sign an affidavit stating they are qualified registered voters in their district.

site and an area which may contain multiple family dwellings are included in the development as well as housing similar to that now in Woodridge. A second site for business was granted along 75th st. in the strip of land also being annexed belonging to Carleton Nadelhoffer.

### Ordinance Changes

Before proceeding to the business of the actual signing of the agreement between the village and Winston-Muss, it was necessary to pass several ordinances which had been agreed upon by both parties. Ordinance 63-12 makes changes to the present Woodridge zoning ordinance, and the subdivision control ordinance was modified by ordinance 63-18. These changes were necessary for the type of development proposed by Winston-Muss. Hearings on these changes had been conducted earlier by the plan commission which recommended approval of the changes.

Wayne Bryant, plan commission member, said in a letter to the board that he objected to a separate water company for the area and to the business zoning granted along 75th st. He did, however, approve all other aspects of the changes to the ordinances and the zoning to be established.

### Resolution Approved

With the preliminary steps out of the way, the board then read and adopted a resolution directing President William Roberts to sign the agreement. A short recess was called and the signing was completed. After the signing of the agreement, the board reconvened and passed the actual annexation ordinance 63-19. This was followed by the passage of ordinance 63-20 which designates the various zoning granted for the area.

Roberts read a covenant between the village and Carleton Nadelhoffer in which certain types of businesses are excluded from the area in Nadelhoffer's property which is zoned for business. These deleted permitted uses include: cartage or trucking, dry cleaning plants, feed shops, garages, sheet metal shops, open sales lots and building materials, fuel and ice houses, machinery sales, storage and warehouses. Objections had been raised at a previous public hearing that the B3 zoning being granted would allow many businesses which do not belong in this kind of area. The covenant expressly forbids many types of businesses which would normally be allowed in a B3 area. Edward Levin, attorney, announced that Winston-Muss would also agree to this type of limitation on its B3 area.

President Roberts said that a letter of covenant from Winston Park Estates is forthcoming regarding restrictions of

Turn To Page 2

# the Woodridge News Review

THE WOODRIDGE COMMUNITY NEWSPAPER

Published every Thursday by the Woodridge News Review, Inc., a not-for-profit corporation, at 7630 Westview Lane, Downers Grove, Ill., Phone WO 8-1548. Second Class postage paid at Downers Grove, Ill. For subscriptions contact Robert Bonk, 7612 Catalpa Ave., WO 9-6491.

EDITOR - Carl Warner, 7630 Westview Lane - WO-8-1548

ADVERTISING SALES      ACCOUNTANT      CIRCULATION MGR.      BUSINESS MGR.  
 Bob Manges Phil Amoruso      Roman Lins      Bob Bonk      Nick Lung  
 Barb Cooling

PRODUCTION DEPARTMENT      PHOTOGRAPHER      PHOTO PRODUCTION  
 Bob Murphy      Bob Sievert      Joe Wollney

REPORTERS  
 Nan Davis, Ellie Murphy, Nancy O'Connell, Gerry Woody, Marion Coty,  
 Nancy Wehrman, Shirley Manges.

COPY COORDINATOR      TYPISTS      MAILING  
 Mary Catherine Himes      Pat Boyna, Bette J. Smale      Barbara Bonk

ARTISTS      Dee Warner      LIBRARIAN      CLASSIFIED ADS  
 Fran Oldenburg, Marie DiFrancesco      Bobbie Munsterman      Joan Jeffrey

## A New Era

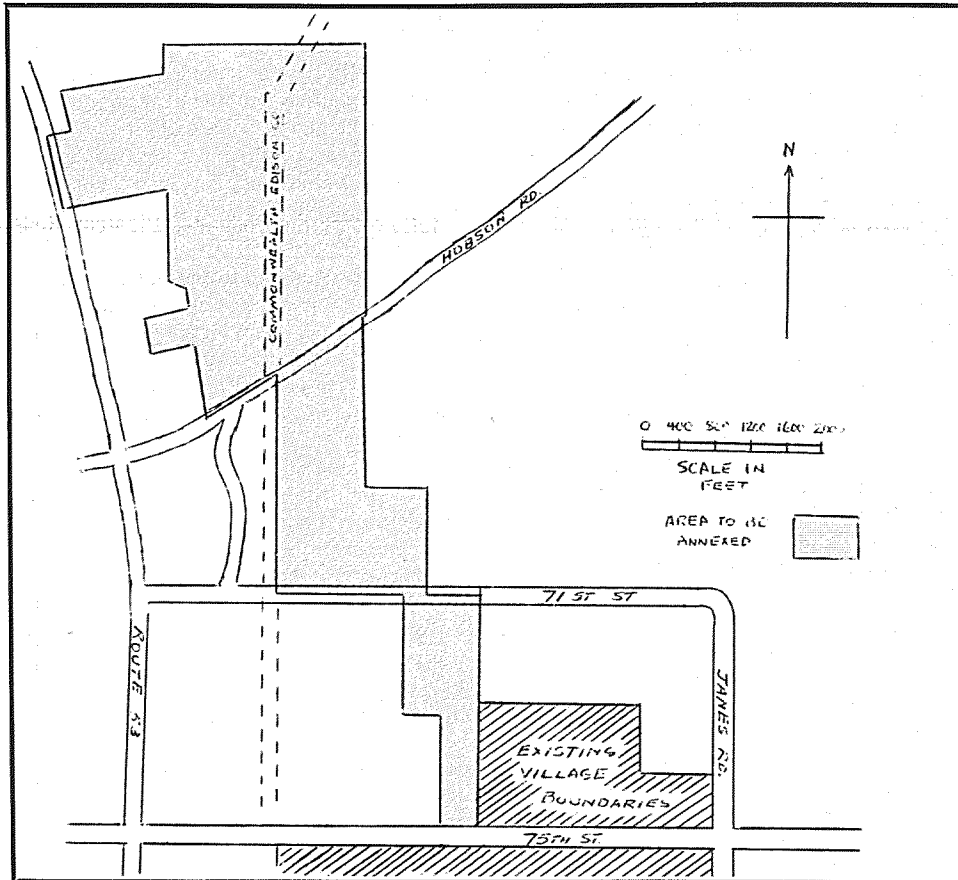
Barring an unfavorable vote on Oct. 5, the annexation of the Winston-Muss territory is a reality. Negotiations for this annexation have been going on for more than a year. We all owe a vote of thanks to the present village board as well as to the previous board for the many long hours put into these negotiations. The village has driven what we think is a good bargain, and the school district has also benefited. We urge the citizens of Woodridge to approve this agreement.

We are now entering into a new era in the history of Woodridge. Not only has the area within the village boundaries more than doubled, but it can reasonably be expected that the population will soon also double. Along with this tremendous growth will come the problems inherent in such growth. For example, more policemen and building inspectors will be needed, park sites must be developed and a civic center must be built. Ways will have to be found to finance needed services the village will be expected to provide.

Now would be a good time for the community's leaders to forget their past political differences and work together to accomplish what has to be done.

In the future we will be judged only by what we accomplish.

## Annexed Area



Shaded area shown above represents territory proposed for annexation. An agreement was signed between the Woodridge village board and Winston Park Estates, Ltd. Sept. 12. A referendum has been called for Oct. 5 and will give final sanction to or disapproval of the annexation of this property to the village of Woodridge. A portion of the southern part of the property is part of the Nadleoffer farm.

## '63 - '64 Mothers Club Officers



L. to R. Norma Schwindy, ways and means chairman; Joyce Diaz, publicity chairman; Dorrie Keller, secretary; Dorothy Provo, president; Ruth Vondrasek, vice president; Helga Scudder and Grace Kennell, ways and means co-chairmen.



L. to R. Barbara Willis, hospitality chairman; Pat Moe, hospitality co-chairman; Chenzie Narducci, refreshment chairman; Ginger Swierbinski, membership chairman; Carol Davison, membership co-chairman; Delores Zuccaro, refreshment co-chairman; Rose Kolody, health chairman. Absent were Nan Davis, corresponding secretary and Geane Modersohn, treasurer.

**Annex** Con't from page 1  
types of businesses on their property that is to be zoned B-3.

### Ordinance Passed

As the agreement stipulated that a referendum was to be held on the annexation, ordinance 63-21 calling for such a referendum was presented to the board and passed. Motions were then made to pay legal fees to the attorneys who had worked on the annexation. Two checks were received from Winston-Muss totaling \$2,442 of which \$2,000 was paid to James McClure and \$442 to Douglas Comstock.

### First Plat Approved

In a final move the board approved the

## Girl Scouts

Girl scout troop 281 of Woodridge will attend a Camporee held at the Indiana Sand Dunes on Oct. 4, 5, and 6. Also participating will be girl scouts from other vicinities of DuPage county.

### New Reporter

Welcome to Nancy Wehrman, a new member of the WNR staff. Nancy will serve the paper in the capacity of a reporter.

first plat of Winston Hills, unit one. This unit includes 375 lots and two park sites totaling 9.1 acres. Approval was given contingent upon the acceptance of final engineering specifications.

## Naperville Plaza

75th St. to Washington  
then 2 blocks north

Phone 355-6043

FLOOR MODEL

FREEZER SALE

17 CU. FT. CHEST was \$239.95 NOW \$199.95

15 CU. FT. UPRIGHT was \$209.95 NOW \$177.00

& MANY MORE TO CHOOSE FROM

NEW  
Store  
Hours

Monday-Friday  
Saturday

9:30 - 8:30  
9:30 - 5 p.m.

**EGIZIO**


Chevrolet — Oldsmobile

NAPERVILLE

**OK** USED CARS **OK**  
Warranted In Writing

**NITE SERVICE** 7 a.m. to 10 p.m.

**EGIZIO** EL 5-3900  
NAPERVILLE



**MONTGOMERY WARD**

**Naperville Plaza**

75th St. to Washington  
then 2 blocks north

Phone 355-6043

FLOOR MODEL

FREEZER SALE

17 CU. FT. CHEST was \$239.95 NOW \$199.95

15 CU. FT. UPRIGHT was \$209.95 NOW \$177.00

& MANY MORE TO CHOOSE FROM

NEW Store Hours

Monday-Friday 9:30 - 8:30  
Saturday 9:30 - 5 p.m.

# Village, Plan Commission Hold Hearings

Last week village officials were engaged in business preparatory to the signing of the annexation agreement with Winston Park Estates, Ltd. which took place on Sept. 12. Sept. 9, the plan commission conducted a double hearing. Sept. 10, the village board held a hearing regarding the annexation agreement.

## Plan Commission Hearings

The plan commission held two hearings Sept. 9, one covering proposed changes to the subdivision control ordinance, the other on the zoning requested by Winston-Muss for the area under consideration for annexation.

The changes in the subdivision control ordinance are those on which Winston-Muss, Surety Development and the village board have conferred. If the board adopts these changes, the subdivision control ordinance will be changed as follows: Street right-of-ways from 66' to 60'; a corporate bond and escrow may be used in lieu of a surety bond for the finishing of streets and sidewalks; blocks over 900' will not require walk-ways in the middle; lot depths may be 100' instead of 110'; corner lots need be only 15' wider than interior lots instead of 30'; collector streets will have a surfacing of 37' from the back of one curb to another and minor streets 28' rather than 36' face of curb to face for collectors and 27' for minors and cul-de-sacs; sidewalks will be 4" thick on a 4" granule base instead of just 5" thick; the list of allowable trees for developers to plant will include silver maples; the inspection fee will be lowered from 3% to 1 1/2%.

There were about 18 people at attendance at the hearing and most of these remained during a short recess before beginning the second hearing which had to do with the proposed zoning of the Winston-Muss properties. The developer is asking for an R2 zoning for most of his area except for a section along Hobson rd. which is to be R3. R2 zoning is the same as most of Woodridge today; R3 allows multiple-family dwellings.

The builder also requested B3 zoning for a piece of land along Hobson and another strip along 75th st. B3 zoning allows shopping center development.

Some objections were raised by members of the audience that B3 zoning would permit many types of businesses which

would be undesirable to this area. It was suggested to the plan commission that a B2 zoning would be more desirable as it would restrict more critically the kinds of enterprises which could be conducted.

## Village Board Hearing

On Sept. 10 about 35 Woodridge citizens heard the pre-annexation agreement between the village of Woodridge and Winston-Muss. It was read through once completely and again, section by section. During the second reading President William Roberts explained each point and asked for comments and questions. The hearing was in anticipation of the special board meeting on Thurs., Sept. 12 to consider the actual annexation of the Winston-Muss area.

The agreement as read calls for a public referendum on the annexation question as soon as the board officially annexes the area. It also provides for additional annexation of land not now owned by the developer but included in his over-all plan. The agreement states that the village board will approve the present plats from Winston-Muss and future plats as long as they conform to village ordinances.

The zoning of the area is defined in the agreement as R2 for most of the area with a stretch on one side of Hobson rd. zoned for R3, multiple-family, and two pieces of land zoned B3, shopping center sites. One of the business areas is on Hobson across from the R3 area, the other is on 75th st. near Woodridge dr. The village board agrees not to alter the ordinances of the village affecting the developer without prior agreement from him.

Winston-Muss will hold the village free of any damage suit which may arise out of their having a separate water company, and will also bear the burden of legal fees and court costs that may arise in conjunction with any litigation on this point. The possibility of two water companies serving

Woodridge has caused difficulty in the negotiations. A franchise to serve Woodridge was granted by the village to Woodridge Sewer and Water Co. Winston-Muss desires to operate a separate water company to be known as Lisle Utility Co. and plans to ask the county to handle the sewage. This matter is presently before the Illinois Commerce Commission.

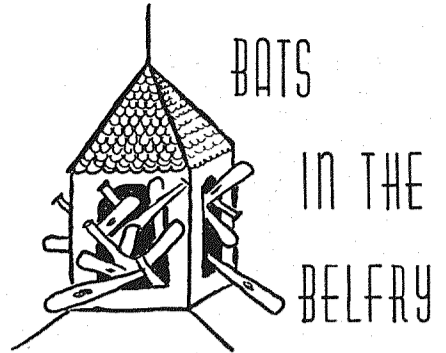
The agreement also refers to the developer's commitment to school district 68 in which he promises \$50,000 (\$37,500 has already been paid) and an additional \$25,000 if he is granted zoning to permit the building of 1700 or more dwelling units (the zoning in the agreement allows this many units). In addition, the builder will give the school district two school sites of at least 8 acres each and will furnish water and sewer connections to these sites as well as to Goodrich school.

Within 30 days after annexation the developer will deed to the village all lands indicated as public. This amounts to 31.3 acres of land. He further agrees that the lands so dedicated will be properly graded and will have at least 4" of topsoil. In addition to the land, the builder is contributing \$25,000 to the village for the purpose of building a village hall or public library.

The agreement states that the village board may not raise the building permit fees more than 5% per year for the next five years, the term of the agreement. If the developer wishes to build any multiple-family dwellings in the R3 area, he will submit site plans to an architect or planner which the village may choose. If there is some disagreement over the planner chosen, both the board and the developer will choose a planner and these two will choose a third. The decision will then rest with the three planners. The developer states in the agreement that he will carry adequate insurance to protect the village from liability occurring from construction.

The last paragraph states that the agreement is binding on both parties. It was brought out at the meeting that recent legislation by the state has given this type of agreement a definite legal status. Prior to this many such agreements would not hold up in court.

There were many questions from the audience concerning the agreement and the builder's general plans. In answer to a question, Joshua Muss, vice president of Winston-Muss, said the firm intends to build 375 homes in the first two years. He said further that the reason for a separate water company was a lack of agreement between Winston-Muss and Surety Development, but he told the audience that the two systems would be compatible and could be joined in the event the village purchased the water companies.



Bill Miller, manager of the St. Scholastica Men's softball team, stopped by last week and asked that his appreciation be expressed to the two sponsors of the team. Carl's Fashion Cleaners and George's Dairy, both of whom also shelled out for boy's baseball, were the fairy godfathers who helped uniform the men.

By the way of celebrating their runaway championship in the Lisle Church League, the members of the team and their wives will banquet in the basement of the St. Scholastica School. The caterers, whoever they are, will have to lose money that night. With behemoths like Miller, Jack Moxley, Stan Paplaczyk, and Don O'Shea, still all growing boys, the feast will probably resemble a Roman banquet of old. Can't you see Bill Miller, with a huge turkey drumstick in each hand, making a thundering victory speech?

The team, already boasting a wealth of softball talent, has many new prospects lined up for the coming season. Undecided on next year's league affiliation, they may make a run for the roses in the Downers Grove Industrial League. Wherever they end up, you can be sure that Woodridge will be well represented.

The National League Pennant chase is still undecided at the time we go to press. The St. Louis Cardinals, with a magnificent stretch record of 19 wins in 20 games, trail the Dodgers by 1 game. If the Cardinals do win, it will be the sixth different team in 6 years to cop the flag. The Braves won in '58, followed by the Dodgers, Pirates, Reds, and Giants. This type of competition brings visions of sugar plums and dollar signs before the eyes of the owners, because the fans come out in droves when competition is so evenly balanced.

The New York Yankees, in a race apparently decided on opening day, continue to steamroll the American League. The Yankees juggernaut has been stopped only twice, in '54 and '59, since 1948. With seemingly inexhaustible reserve strength, the Bronx Bombers win with or without their super stars in the lineup. We'll have to pick the Yankees to repeat as World Champs, it mattering little or not at all who their National League opponents are.

With the football season going into high gear, this reporter decided to show off for the younger set and, with neighbors Young, Dacy and Schulz, loosened up a rusty punting foot. Footballs are obviously much heavier and harder today than they were 15 years ago. They refuse to spiral, will not go over 20 yards, and leave the instep sore as a boil. They just don't make 'em like they used to.

Dick Trondsen

**WELCOME WAGON** JO LETTOW  
WO 9-2283

(Established 1932)  
**LISLE DRUG STORE**  
Prompt, Safe & Dependable Service  
FOR QUALITY AT REGULAR PRICES  
**4734 MAIN**  
**WO 9-1096**

WOODY WOODRIDGE AT LAST!  
VILLAGE BOARD WINSTON MUSS  
NOW - ON TO THE POLLS!  
ARTEE  
© R.T. TRONDSEN '63

**Schwinn**  
MANY STYLES AND MODELS MEN'S AND LADIES'  
SALES & SERVICE  
WE SELL THE BEST - BUT WILL SERVICE THE REST  
DuPage Cycle Co.  
1616 Ogden, Lisle  
Open 12 Noon - 10 p.m.  
WO 9-4339

**JEWEL KNOWS YOU ALWAYS WANT THE BEST FOR YOUR FAMILY**

FOR Quality You'd Insist On AND Jewel "Money Savers"

SHOP AT THE JEWEL STORE IN YOUR NEIGHBORHOOD

3 Jewel Stores To Serve You Are:  
5157 Main St., Downers Grove  
1148 Ogden Ave., Downers Grove  
823 N. Washington St., Naperville & Naperville Plaza

**Jewel Food Stores**  
Happy Families Shop At Jewel!



Get Well wishes to: Kathi Liggett, 2551 Crabtree who recently underwent an appendectomy at Edward hospital; Geane Modersohn, 2928 Forest Glen pkwy, who also was admitted to Edward hospital for surgery; Bobbie Brisentine, 2571 Forest Glen pkwy, convalescing at home after discharge from Norwegian-American hospital.

Belated Birthday wishes to Peggy McNeill, 7670 Sprucewood, who celebrated her 10th birthday on Sept. 13. I hope Peggy isn't superstitious since it did fall on a Friday this year.

Tom and Toni Luttrell, 3015 Everglade ave. are home after vacationing in Iowa.

Lewis and Faye York, 2921 Everglade, also have returned home after spending their vacation in Maine.

Charles and Olga Redfield, 3037 Jonquil N. recently motored to N. Y. accompanied by Olga's aunt, who has been visiting here from Germany. Before returning home they visited Niagara Falls and Buffalo, N. Y. where they visited with the Sauer's family, formerly from Woodridge.

Margaret Czart and three of the Czart children, 2909 Everglade are visiting with Margaret's family in Germany.

Vance Modersohn, who works for Surety Builders, found a dog tied to the fence near one of the model homes the other day. On the fence near the dog was a note. Instructions were: "Take care of my little bog til 4:30."

### New Patrol Boys Chosen

Patrol boys for Woodridge school are busy this year directing traffic and attending to the safety of younger children. Following are the boys and their areas of responsibility: Bill Harwell is assigned to Deerfield and Crabtree; Richard Little in charge of the Crabtree turnaround; Mike McPherson, Crabtree and Catalpa; Mike Muchowski, Willow and Forest Glen; Clifford Guernsey, Deerfield and Larchwood; Billy Murray, Sprucewood and Crabtree; Jim Provo, Walnut and Crabtree; Bob Arnouil, Captain; Mike Aufmann, Forest Glen and Catalpa; Russ Prysbylski, primary doors, Eugene Newell, Forest Glen and Larchwood; Chester Johnson, Woodridge drive; John Beachman, Jr. high door.

Substitutes are: Bob Little, John Narducci, John Tucker and Bruce Wilgus.

Monitors for the playground are Susan Miller and Susan Muchowski.

There are no patrol boys at Goodrich school since the number of students walking is too few to warrant it. However, Mr. Tousignant announced that he had contacted Mr. Mason, traffic manager of district #1 in Illinois about the possibility of getting a cross signal at Rt. 53 and Hobson rd. Mason said that he would investigate the matter and if the number of children crossing at that point warranted it, a crossing signal could be placed there. Presently, there are not many children who have to cross the highway.

### Motor Fuel Tax Bids Approved

At the Sept. 12 meeting of the village board, bids were approved for public works supplies to be purchased with motor fuel tax funds. The supplies include salt, cinders, bituminous patching material and gravel.

The bid for 80 tons of rock salt went to Morton Salt Co. for \$12.20 per ton or \$976 total. The board had first considered giving the bid to International Salt whose bid was identical and who had supplied the village with salt last winter. The Morton bid, however, contained a price guarantee until March, 1964, which the board felt was a necessary safeguard.

Only single bids were received for the other materials. The 60 tons of cinders required will be obtained for \$4.00 per ton. Black topping will cost the village \$8.50 per ton for 175 tons and gravel will be \$1.40 per ton for 30 tons.

### HELP NEEDED!

WNR, now on a weekly basis, is in need of additional staff members in all departments. Your paper is a community effort and depends on community interest and contributions. If you are interested in any phase of the newspaper business, please call WO 8-1548.

### Garden Club Notes

The first meeting of the 1963-64 Woodridge Garden Club season was held at the home of Mr. and Mrs. Ray DiFrancesco, 2935 Westridge dr., Sept. 12.

The program consisted of a small flower show. Members brought either flowers or vegetables from their garden or dried or floral arrangements of their own making. Ribbons were awarded.

The Woodridge Garden Club is a non-fund raising organization whose members are interested in learning how to care for their yards and plants. Membership is open to all Woodridge families. Dues are \$2 per year per family.

### SSWC Plan Hat Show

The first meeting of the St. Scholastica Womens' Society will be held on Tues. Sept. 24, at 8 p.m. in the school basement Janes rd. and Crabtree ave.

Following the business meeting, a program, "Winter Bonnet Preview" will be presented by some of the members of the society. Millinery that will be modeled are from the Elmcraft Co., Chicago, and may be purchased by anyone desiring to do so.

A cordial invitation is extended to all to attend.

**HAVERLANDT'S  
TV SERVICE**

**Bonded Technicians  
Fair Prices  
90 Day Guarantee**

**Call Today  
WO-9-2299**

**4754 Main Lisle**



MONTGOMERY  
WARD

SALE

AT NAPERVILLE PLAZA

2 Days Only

HARDWOOD  
PANELING  
SALE

REG. \$4.07

NOW \$3.66  
ONLY

Prefinished  
Philippine Mahogany  
4 x 7-ft. Panel

NO MONEY DOWN

Panel a 16 x 7-ft. wall for only \$14.64

- Genuine Hardwood veneer,
- Edges form natural grooves; hide joints.
- Full 1/4-inch thick random groove panels.
- Ready to install; need no special tools.

Look how little it costs to have the warm beauty of genuine hardwood paneling in den, family room, wherever you wish! It's easy to install... simply nail or cement it into

Amazon Maple \$9.65
Cherry, Birch, Elm, Pecan, Walnut \$15.95

OTHER FINISHES ALSO ON SALE—SEE THEM FRI. & SAT.

2 Days - September 20 and 21

Call 355-6043

New Store Hours:  
9:30 - 8:30  
Monday thru Friday  
9:30 - 5:00 Saturday

NOW is the time to replant your summer neglected planters.



PHILODENDRON

Large selection of fresh green plants

Groveside Gardens

501 63rd St.

DOWNERS GROVE 1/2 MILE EAST OF GREEN KNOLLS SHOPPING CENTER

WO 9 0088 FLORISTS - WE DELIVER

Praise

Con't from page 1

He concluded that he would like to see the people support the referendum as it assures planned growth for Woodridge.

New Law Passed

A new law that came out of this recent legislative session: After Jan. 1 you will not be allowed to use only your parking lights while driving. Parking lights may be used only when the car is parked.

Rail Tax Fight May Hit Schools

The railway companies' heated legal battles over taxation that have been waged across Illinois over the past six years, may now be headed for a showdown.

Senate Bill 946 recently signed by Gov. Otto Kerner, seems to give the railways some relief in their tax burden. If so it could mean higher taxes for other tax payers.

DuPage county school authorities are concerned to the point of calling a special meeting to consider the problem.

Representatives of 42 school districts met in Wheaton Sept. 10 with their attorneys to discuss ways of resisting the tax change. The schools, largest of all taxing bodies will be hardest hit if the railways are to be assessed at a rate comparable with other properties.

Heretofore, they claim, their tax rates were fixed at 100 per cent of assessed valuation. Railway property is assessed by the Illinois State Department of Revenue. But county assessors make the evaluations in each county on the remaining properties.

SB 946 says, in effect, that when the Department of Revenue assesses railways property at 100 per cent it then will go to the counties where the equalizer is applied according to each county's assessment rate. In some counties this is as low as 18 per cent. In DuPage it runs about 52 per cent.

While all tax bodies would be affected by this decision school districts would be hardest hit. Increase in tax levies would probably be sought by some. Others are now operating at their maximum rate.

Classified Ads

FOR SALE

6-1/2 in. table saw complete with tilt top table and 1/4 h.p. motor and extra blades \$10. Wo8-9072

Large hobby horse, spring type with porcelainized rubber horse-like new. \$6. Wo8-9072

Eggs-pullet-25¢ per doz. 8204 Janes rd. First farm south of Woodridge on Janes rd. Please return cartons. L. Pfaff. Wo8-0937

Order your Christmas cards now. Names printed or plain. \$1.95 and up. Call Elizabeth Guldin after 7 p.m. Wo8-4566 Moving-must sell - Westinghouse washer and dryer (electric) 2-1/2 years old. \$150 969-4853

SITUATIONS WANTED

Earn free clothes, have a style show. No obligations. Call V. Poppen. Wo8-9214

Someone to donate an electric refrigerator for kitchen at Woodridge school. Please call Wo9-0810 or Wo9-1497

LOST AND FOUND

Lost: red and white tricycle "Murray" about 3 mos. ago. Wo9-6493 after 6 p.m.

HELP WANTED Reliable person to care for 4 children (3 school age) in my home. 7 a.m. to 6 p.m. Wo9-6493

A hearing is scheduled for Sept. 17 in DuPage County Circuit Court on tax objection of the Burlington railway. All the railways passing through this county have paid taxes under protest in the past years. The difference in their tax rate and that of other properties is being held in escrow pending final settlement of the controversy.

REALLY BIG

\$2

GLORIFIED GREASE JOB

\$2

- LUBRICATE ALL FITTINGS
LUBE GENERATOR
LUBE DISTRIBUTOR
CHECK TRANSMISSION & DIFFERENTIAL
CHECK POWER STEERING FLUID LEVEL
CHECK BRAKE FLUID LEVEL
CHECK STRENGTH OF ANTI-FREEZE

- CHECK BATTERY LEVEL & CLEAN CABLES
CHECK TIRE PRESSURE
CHECK FAN BELT
CLEAN AIR CLEANER
CHECK & TIGHTEN ALL HOSE CONNECTIONS
TIGHTEN ALL BODY BOLTS
WASH ALL WINDOWS - VACUUM INTERIOR

AUTHORIZED LEMONT CHEVROLET DEALER

SPECIAL WHILE IT LASTS
G.M. PERMANENT
ANTI-FREEZE \$1.49 A GAL.
SERVICE & PARTS DEPT.
HOURS
MON. - FRI.: 8 am. 9:00 pm.
SAT. 8:00 am. TO 12 NOON

CALL 838 - 4646

FLETCHER CHEVROLET BUICK
44 STEPHEN ST., LEMONT

LEGAL NOTICE
NOTICE OF SPECIAL ELECTION

Public notice is hereby given that on Saturday, the 5th of October, 1963, a Special Election will be held in the Village of Woodridge, DuPage County, Illinois, at which election there will be submitted to the voters of said Village the following question:

"Shall the following described property:

That part of Sections 14 and 23, Township 38 North, Range 10 East of the Third Principal Meridian, in DuPage County, Illinois, described by commencing on the Section line, 21.30 chains (1405.8 feet) North of the Quarter Section Post between Sections 22 and 23 and running thence North 87° East 8.31 chains (548.46 feet) to the center of Joliet Road (now known as State Bond Issue Route 53) for a place of beginning; thence North along the center of Joliet Road, 20.56 chains (1356.96 feet) to the South line of Charles Mochel's farm lying East of the Joliet Road; thence north 85 3/4° East along Mochel's South line 22.67 chains (1496.22 feet); thence North 10° East, 5.85 chains (386.10 feet); thence East 33.12 chains (2185.92 feet) to the division line; thence South along division line 8.85 chains (584.1 feet) to division corner; thence West along the section line, 32.79 chains (2164.14 feet); thence South 10° West, 15.03 chains (991.98 feet); thence South 79° West along Goodrich's North line, 18.84 chains (1243.44 feet) to the center of the Road and the place of beginning; excepting therefrom that part thereof described as follows: That part of Sections 14 and 23, Township 38 North, Range 10 East of the Third Principal Meridian, in DuPage County, Illinois, described as follows: commencing on the section line 21.3 chains (1405.8 feet) North of the Quarter Section Post between Sections 22 and 23 and running thence North 87°45' East 8.31 chains (548.46 feet) to the center of Joliet Road; thence Northerly along the center line of Joliet Road 20.56 chains (1356.96 feet) to the South Line of Charles Mochel's farm lying East of the center line of Joliet Road for a place of beginning; thence North 85°45' East along Mochel's South line for a distance of 302.25 feet; thence Southerly, parallel with the center line of Joliet Road for a distance of 522.72 feet; thence South 85°45' West for a distance of 302.25 feet to the center line of Joliet Road; thence Northerly, along the center line of Joliet Road for a distance of 522.72 feet to the place of beginning, in DuPage County, Illinois; and also excepting therefrom a tract described as follows: commencing at the intersection of the East line of said Route #53, and the line of wire fence located at the Northerly side of the gravel driveway and running thence Easterly, on a straight line, along said fence line and said line extended, 260 feet; thence Southerly, parallel with the center line of said State Route #53, to the South line of said tract; thence Westerly, along the Southerly line of said tract 310.0 feet, to the center line of said State Route #53; thence Northerly, along the center line of said State Route #53, to a point in the said center line which will coincide with the line of the first described course (of this excepted tract) extended Westerly; thence, Easterly along said extended line 50 feet, more or less, to the place of beginning, in DuPage County, Illinois,

-and-

That part of Section 23; Township 38 North, Range 10 East of the Third Principal Meridian, described as follows, to wit: Beginning at the Northeast corner of the West half of the Northeast quarter of said Section 23, and running thence South along division line 33.43 chains to center of road; thence South 46 1/2° West along center of road, 9.14 chains; thence South 52 1/2° West along center of road, 15.44 chains to a point 1 chain East of the Quarter Section line; thence South 62 1/2° West along center of road, 20.09 chains; thence South 67 1/2° West along center of road, 3 chains to intersection of center of the Joliet Road; thence North 11° West along center of Joliet Road, 4.14 chains; thence North 17 1/2° West along center of Joliet Road, 38.81 chains to the South line of land belonging to the Estate of Thomas Lyman, deceased; thence North 80° East along said Lyman's South Line, 19.03 chains; thence North 15.03 chains along said Lyman's line to Section line at a point 12.95 chains West of Quarter Section corner; thence East along Section line, 32.95 chains to the place of beginning; excepting therefrom that part lying West of the East line of A. W. Abbott's Assessment Plat dated the 6th day of February, 1956, and recorded with the Recorder of Deeds of DuPage County, Illinois, as Document No. 793499, all in the Township of Lisle, in DuPage County, Illinois.

-and-

Lot 4 in A. W. Abbott's Assessment Plat dated the 6th day of February, 1956, and recorded with the Recorder of Deeds of DuPage County, Illinois, as Document No. 793499, of part of the West half of Section 23, Township 38 North, Range 10, East of the Third Principal Meridian, in the Township of Lisle, in DuPage County, Illinois.

NOTICE OF SPECIAL ELECTION (cont.)

-and-

That part of Section 23, Township 38 North, Range 10 East of the Third Principal Meridian, described by beginning at a point in the South line of said Section 23, 276.0 feet East of the Southwest of the Southeast quarter of said Section 23 (said point being in the East line of the Commonwealth Edison Company right-of-way through said Section) and running thence North 0° 45' 35" East on said East right-of-way line, 2197.29 feet to the center line of Old Hobson Road; thence North 55° 0' East on said old center line, 760.48 feet to an angle in said center line; thence North 46° 0' 20" East on said old center line, 488.11 feet; thence South 0° 45' 35" West, parallel to said right-of-way line, 2980.76 feet to Section line; thence South 89° 30' 50" West on said South line, 963.73 feet to the place of beginning, in the Township of Lisle, in DuPage County, Illinois.

-and-

That part of Section 23, Township 38 North, Range 10 East of the Third Principal Meridian, described by beginning at a point in the South line of said Section 23, 1239.73 feet East of the Southwest corner of the Southeast quarter of said Section 23 and running thence North 0° 45' 35" East, parallel with the East line of the Commonwealth Edison Company right-of-way through said Section, 900.00 feet, thence North 89° 30' 50" East, parallel with said South line, 741.07 feet, thence South 0° 45' 35" West parallel to said right-of-way line 900.00 feet to the South line of said Section, thence South 89° 30' 50" West on said South line, 741.07 feet to the place of beginning, in the Township of Lisle, in DuPage County, Illinois.

-and-

The East 14.50 chains (957 feet) of the North half of the Northeast quarter (lying North of the Indian Boundary Line) of Section 26, Township 38 North, Range 10, East of the Third Principal Meridian, in the Township of Lisle, in DuPage County, Illinois.

-and-

The East 490.00 feet of the Northeast fractional quarter (South of the Indian Boundary Line) of Section 26, Township 38 North, Range 10 East of the Third Principal Meridian, in Lisle Township, DuPage County, Illinois, excepting therefrom that part of 75th Street which has heretofore been made part of the Village of Woodridge.

be annexed to the Village of Woodridge, Illinois?"

The entire Village shall constitute one precinct for such election, and the polling place shall be as follows:

Polling Place: Village Hall
2909 Forest Glen Parkway
Woodridge, Illinois

The polls for said election will be opened at 6:00 A.M. and will be closed at 6:00 P.M., C.D.T. on the date of said election. All persons qualified to vote at regular Village elections are qualified to vote on said question.

By order of the President and Board of Trustees of the Village of Woodridge, DuPage County, Illinois.

Dated this 12th day of September, 1963.

W. T. Roberts

Village President

ATTEST:

Village Clerk



Heffman

Published September 19, 1963 in the Woodridge News Review

## School Board Reviews *Your New Teachers* Insurance Needs

A survey and reevaluation of the schools' insurance needs is being made by the district #68 board of education. Last month, N. Weinfeld of American Casualty presented a plan of insurance which combined all insurance needs into one package. The plan is comparable to institutional insurance but is adapted to school needs. At the Sept. 9 meeting, Everette Brown of Travelers Insurance Co., presented an insurance plan. One presentation was made by mail by Wm. Brown of the Forest Agency in Oak Park for the Great American Insurance Co. The board is considering the presentation of the three insurance representatives in their school insurance review.

The board has purchased maps and globes from Denoyer-Geppert Co., as a result of a survey made last year of school needs. These additional maps and globes will supplement social studies in all grades.

Praise your wife, even if it frightens her at first.

**ATTENTION TV OWNERS**

**"PICTURE PERFECTION TELEVISION"**

WASHER & DRYER REPAIRS

WANT THE JOB DONE RIGHT  
CALL ME TONIGHT

**FRANK R. DALU 969-0525**

There are 11 new teachers in the district 68 school system this year. Ten are teaching at Woodridge and 1 at Goodrich. During the course of the school year, WNR wishes to introduce you to YOUR NEW TEACHERS.

The new additions to the Woodridge teaching staff include Miss Linda Rathje, an attractive young woman who has chosen teaching because she "gets a great deal of satisfaction in seeing children learn."

This is Miss Rathje's first teaching post after getting her BA in education from Iowa Wesleyan College with a secondary degree in Biology. As a student she was active in Student Council and in sorority, Zeta Tau Alpha. Miss Rathje, who is teaching the second grade this year, is now living in Naperville. She was born and raised in Wheaton.

As a second grade teacher, Miss Rathje stated that she hoped her students would primarily achieve the ability to spell through phonics and learn to pronounce new words this year. She feels that the phonic method of learning to read and spell is far more beneficial to the students than the sight method by which she was taught as a grade schooler.

When asked what she felt parents could do to help their children toward a successful year, Miss Rathje expressed the hope that parents would follow the instructions teachers might give them and show a genuine interest in what the children are learning and doing each day.

The WNR on behalf of the community wishes Miss Rathje great success in her new profession and hopes she finds Woodridge a pleasant place in which to teach.

## ---ABOUT OUR CHURCHES---

### Prince Of Peace

The Luther League of the Prince of Peace Lutheran church will sponsor a hayrack and bonfire on Fri., Sept. 20 8 p.m. This activity is for young people age 12 and older. Fun, fellowship, and inspiration are the orders for the night. Refreshments will be served. Make your reservations by calling the Church office, Wo9-1268. The cost is \$1.00.

On Fri., Sept. 27, 8 p.m., men are invited to attend a meeting to discuss the possibility of organizing a Lutheran Church Men's group. The purpose of the meeting is to present what programs and activities men can do and support in the Church and to analyze how many men would be interested in such a group.

Sun., Sept. 29, 10:45 a.m. is Rally Day in the Sunday Church school. The children will be moved into their new classes. New students may enroll. The minimum age is three years old or three years by November 30, 1963. There are classes for all ages through adults.

### Methodist

All youngsters are reminded that Membership Preparation Classes (Confirmation class) will begin Sat., Sept. 21 at 9:30 a.m. at the Parsonage, 2629 - 75th st. This class is for 12 to 17 year old young people.

Also, don't forget Methodist Youth Fellowship. This will start Sun., Sept. 22 at 7 p.m. at the Parsonage and is for young people, age 10 and up. Youngsters will be divided into junior and senior groups with plenty of fun planned in the weeks ahead.

There will be a Sunday school teachers' meeting on Sept. 19 at the Parsonage. We need teachers. Won't you help?

### Trinity Lutheran

Junior Choir rehearsals for children through the eighth grade will begin on Sat., Sept. 21, 10:30 a.m. at Trinity Lutheran Church located on highway 53 just south of Lisle. All children are welcome. The choir rehearses each Saturday under the direction of Mrs. Virginia Snow, and sings at one of the Sunday services about twice a month.

The Senior Choir will resume rehearsals after their summer vacation on Tues. night, Sept. 24, 8 p.m. This choir is for all high school students and adults who like to sing. Under the direction of Mr. Louis Mueller, the choir rehearses every Tuesday evening and sings at one of the services on Sunday about twice a month.

A promise is a mortgage until it becomes a deed.

### St. Scholastica

The St. Scholastica Confraternity School will open on Saturday, Sept. 21. Grades five through eight will have class from 9:00 to 10:20 a.m.; grades one through four will have class from 10:30 to 11:50 a.m. All classes will meet in the St. Scholastica school buildings, Janes ave., and Crabtree. A Confraternity kindergarten is planned for the near future. The Confraternity School is for all Catholic children not attending a Catholic school.

Schedule for the Confraternity High School is as follows:

First and Second Year Students: Sunday Sept. 29 - 9:00 to 9:45 a.m. in the St. Scholastica School.

Third and Fourth Year Students: Wednesday Sept. 25 - 7:30 to 8:15 p.m. in the Baaske home - 7622 Sprucewood ave.

There will be an open-house for Confraternity High School Students and their parents on Sunday, Sept. 22, at 7:30 p.m. in St. Scholastica School. This will provide an opportunity for parents and students to meet with the teachers, examine the teaching materials that are used, and to enjoy refreshments. All parents and students are cordially invited to attend.

Sunday, Sept. 22, will be Communion Sunday for all of the Women of the parish at the 8 a.m. Mass. The first meeting of the fall for the Women's Society of the parish will take place on Tuesday, Sept. 24 at 8 p.m. in the lower classroom of the school. A Hat Demonstration will be the featured entertainment of the evening. All women who live within the parish boundaries are welcome to become members of the Society.

The next meeting of the St. Scholastica Youth Club will be on Friday, Sept. 20. Meetings are held regularly at 8 p.m. in the lower classroom. Plans are being made for a skating party. Nominations for officers will be considered at the meeting.

### Village Baptist

Mr. Robert Bruce will speak for all services on Rally Day, Sept. 29. He will bring his English Constantina, a musical instrument, and also prizes for the children. He was here last Easter and brought a live lamb to illustrate the Easter story. Children will be promoted to their new Sunday school classes on this Sunday.

Mr. Clements will preach for both services on Sun., Sept. 22.

The missionary group for the ladies had its first meeting on Tuesday, Sept. 10 at the home of Jack Collins on Everglade.

The weekly calendar of the church is the following:

Sunday: Sunday school, 9:45 a.m.;  
Worship service, 11 a.m.; Young people's, 5:45 p.m.; Evening service, 7 p.m.  
Wednesday: Prayer meeting, 7:30 p.m.

## FOR ALL YOUR INSURANCE NEEDS

COVERAGE FOR OVERAGE - UNDERAGE & CANCELLED DRIVERS

### WALKER R. GAMBLE

900 Ogden Ave • Lisle, Ill.

WO 8-3892

## REMEMBER

*We are open every evening  
until 9 pm Monday through Friday  
All day Sat. - Sunday 9 'til 1 pm*

\* \* \*

*Everything you need to fix, repair  
or remodel your home  
at competitive prices plus*

**FREE DELIVERY**  
*including a full line of plumbing  
& electrical supplies*

\* \* \*

## SPECIAL!

*Close out reject flush doors  
BIRCH & MAHOGANY all sizes  
ideal for closets tables, etc.*

**\$ 3 95 EA.**

**"YOUR FRIENDLY LUMBERMAN"**  
**HANKINSON LUMBER AND SUPPLY CO.**  
1909 OGDEN AVENUE, LISLE Call WO 9-2718

**SYLVAN GREEN NURSERY**  
5506 BELMONT ROAD DOWNERS GROVE, ILL.  
WOodland 8-5071

**"WHERE A GUARANTEE IS PART OF EVERY SALE"**

**Evergreens Shade Trees Shrubs**

FRANCHISED DEALERS FOR THE FOLLOWING:  
**Greenfield • Heritage House • Vertigreen • Ortho**

FREE USE OF LAWN FEEDERS, FERTILIZER SPREADERS, NO OBLIGATION

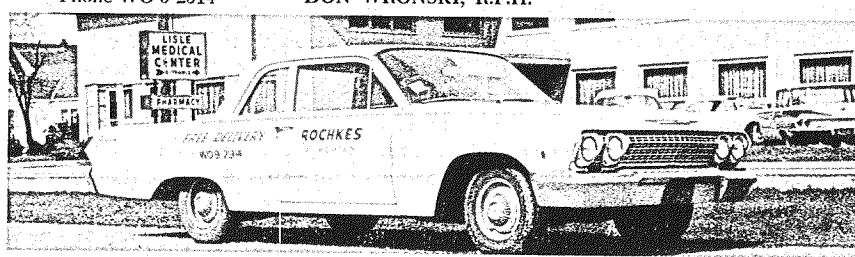
Its just good sense to shop for your outdoor living needs at a nursery which understands your problems.

**We plant lawns  
Sod for sale at the nursery**



**Rochkes Pharmacy** Prescriptions Drugs Cosmetics Baby Needs

Lisle Medical Center Bldg.  
Phone WO 9-2914 **DON WRONSKI, R.P.H.**



**FREE DELIVERY** **FREE DELIVERY**

**Rochkes Lisle Pharmacy**  
Pharmacy Open:  
Mondays thru Fridays 9:30 a.m. - 10 p.m.  
Saturday 9:30 a.m. - 6 p.m. Closed Sundays and Holidays